



PEEC
Pocono Environmental
Education Center

2016 Annual Report



PEEC.ORG

PEEC Board of Trustees

MISSION: The Pocono Environmental Education Center (P.E.E.C.) advances environmental education, sustainable living and appreciation for nature through hands on experience in a national park.

VISION: ...an environmentally enlightened world...

PEEC Board of Trustees

OFFICERS

Chairperson: Dr. K. Joy Karnas
Vice-Chairperson: Marc Gold
Treasurer: Brian O'Hare
Secretary: Henry Skier

TRUSTEES

Dr. Barbara Brummer
Richard R. Lindsey
Charles Paull
Norman W. Spindel
Dr. Howard P. Whidden

EMERITUS

John (Jack) Padalino
Dr. Calvin Stillman

IN MEMORIAM

Dr. Paul F. Brandwein
Dr. S. Marie Kuhnren
Dr. Harry Miller, Jr.
J. Thomas Seely

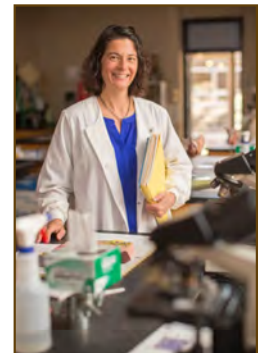
As the American naturalist, John Burroughs wrote, "Most young people find botany a dull study. So it is, as taught from the text-books in the schools; but study it yourself in the fields and woods, and you will find it a source of perennial delight." Thus, at the center of PEEC's mission is the goal to provide students with a "hands-on experience in a national park" in order to engage and enlighten our youth.

The natural world provides us with endless opportunities to teach our children and our communities about the impact of human actions on our planet. Everyone who comes to PEEC learns more about science, and about themselves as they broaden their mind, increase their scientific literacy, work with others as a community, and find their own courage to stand for what they know to be true. It is so important that we not only appreciate the natural world, but cherish it and preserve it for future generations. This call to action begins with science education at centers like PEEC.

In the words of Neil deGrasse Tyson, "Once you have an innovation culture, even those who are not scientists or engineers - poets, actors, journalists - they, as communities, embrace the meaning of what it is to be scientifically literate. They embrace the concept of an innovation culture. They vote in ways that promote it. They don't fight science and they don't fight technology."

It is crucial that we all do our part to increase awareness, scientific literacy, and general understanding about the facts of climate change. This planet cannot survive without your help. French President, Emmanuel Macron said it best when he stated, "...wherever we live, wherever we are, we all share the same responsibility to make our planet great again." Be guided by knowledge and use your innate curiosity about the natural world to ask questions and seek scientifically fact-based answers. Participate in a science rally, donate to a science-driven organization, educate yourself, or teach others. Come visit PEEC—take a workshop or participate in a family program; support the great work that PEEC does by making a donation or participating in a fundraiser; join us for our Mary Chapin Carpenter concert; or simply take a hike, and get lost in the natural wonder of a National Forest for a few hours. See you at PEEC!

K. Joy Karnas, Ph.D.
Chair, PEEC Board of Trustees



K. Joy Karnas, Ph.D.
Chairperson

PEEC People



Jeff Rosalsky,
Executive Director

PEEC Management Team

Executive Director - Jeffrey Rosalsky
Director of Development - Ed Winters
Director of Business Management - Mariann Oswald
Facilities Manager & Physical Plant Manager - Ted Wetzel
Head of Maintenance - Marc Wetzel

PEEC People

Director of Education - Allison Owczarczak
Director of Group Program Business Development - Sheri Bone
Program Planner - Sheri Bone / Ryan Gerbehy
Program Coordinator - Lea Della Vecchia
Public Program Manager / Volunteer Coordinator - Derek Scott
Summer Camp Director / Special Events Coordinator - Andrea Ace
Dining Hall Manager - Wendy Gannon
Public Relations/Marketing - Janine Morley

Instructors & Interns

Melanie Collins, Diana Corrado,
Amanda Dahms, Jarred Harris,
Eliza Hollister, Casey Kilian,
Beth Kuemerle, Nathan Lanan,
Emily Lanthier, James Maloney,
Ryan McLaughlin, Emily Palumbo,
Maggie Patterson, Bryan Molyneux,
Mason Ritter, James Scott, Alyssa
Tomaskovic, Tara Wilt, Tiffany Yeung,
Susie Yorks

"This was the best day of my life ever!" ~ Belmont Charter School, Philadelphia, PA

2016

In Their Own Words

A HUGE thanks to you and the entire PEEC staff for an amazing weekend for our students. It was a great example of the power of experiential learning that engaged students' hearts and minds. PEEC will be a lasting memory to them for years to come thanks to your caring and skilled staff.

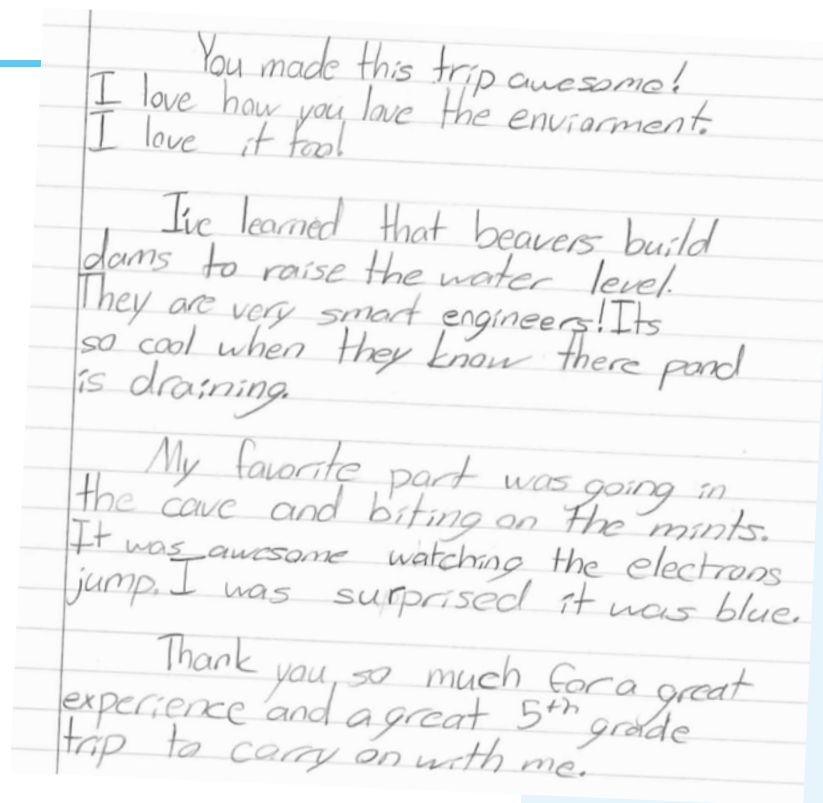
We hope to make this an annual event!!

All the best,

JoAnne Di Lauro
School Counselor

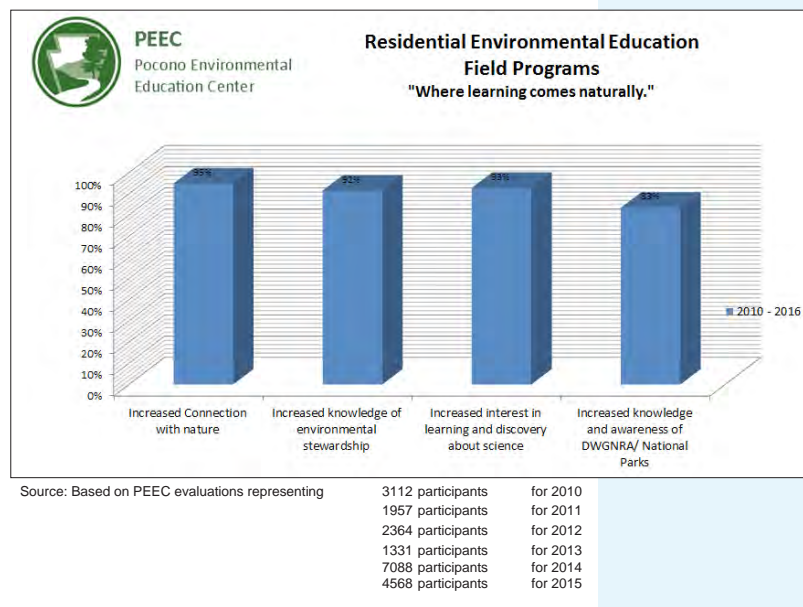
International Community High School

You made this trip awesome! I love how you love the environment. I love it too! I've learned that beavers build dams to raise the water level. They are very smart engineers! It's so cool when they know there pond is draining. My favorite part was going in the cave and biting on the mints. It was awesome watching the electrons jump. I was surprised it was blue. Thank you so much for the experience and a great 5th grade trip to carry on with me.



PEEC's Program Assessments

- PEEC staff continues to be highly effective using hands-on techniques to teach environmental and sustainability education and spark interest in STEM fields.
- The immersive nature of our multi-day residential programs set the stage for a lifelong interest in science and the natural world.



"I could stay here for 3 weeks." ~ Paxton Hollow Middle School, Broomall, PA

2016

Take a PEEC!



Nature Adventure Camp – PEEC's Nature Adventure Camp is designed to help campers grow and explore while under the guidance of highly-trained staff members. In 2016, 314 campers attended seven weeks of day and residential camp programs. 26 campers received financial assistance through camperships, which are funded by the **Heather Rosborough Fund**, the **Biondo Family Foundation**, and generous individual donations.

Festivals – Earth Day and Harvest Festivals are events for the community to celebrate the planet and local resources. Local businesses, nonprofit agencies, artists, and crafters come to PEEC each year to share information, goods, and services with the community. Hundreds of individuals and families attend each festival and enjoy a variety of activities, including crafts, music, games, hikes, and food.



Scouting Program – PEEC's scouting programs offer specialized educational experiences for Boy Scout and Girl Scout troops. Badge Festivals are day programs that allow both individual scouts and troops to spend the day working towards outdoor and environmental badges. Several scout troops come to PEEC as a yearly trip to learn about environmental issues, group initiatives, and camping/survival skills.

Bridge the Gap (BTG) – This **William Penn Foundation** funded program encouraged people to hike trails, bike the McDade Trail, and paddle in PEEC's ponds and the Delaware River. There was an intention of having them "bridge (informational) gaps" as they saw the connection between healthy forests and the streams and rivers that flow through them. Over 1000 people participated in this program by either participating in planned activities or hiking on their own and completing surveys. Watch for QR codes on trees and posts on PEEC trails! Also did you notice the sign on the Dingmans Ferry Bridge as you paddled down the river? That project also was part of BTG!



Educational Improvement Tax Credit (EITC) – PEEC received EITC funds from **Dime Bank** and **Waste Management** for local students and residents to participate in PEEC programming. Over 300 4th graders from Delaware Valley School District and East Stroudsburg Area School District, plus numerous residents, spent time at PEEC learning about the watershed and wildlife studies as they participated in environmentally related activities.



"I wish you'd take us here all the time." ~ Elysian Charter School, Hoboken, NJ

2016

Summer Science in the Poconos – 60 Middle School students and their chaperones from Newark, NJ, attended PEEC this past June. Thanks to generous funding from the **Victoria Foundation** and **PSEG**, the students were able to spend 5 days and 4 nights doing all things PEEC! They hiked, participated in ecology classes, toasted marshmallows over a campfire, and even got to “Choose their Own Adventure!”



Ticket to Ride (TTR) and Every Kid in a Park (EKIP) – The beginning of 2016 saw us wrapping up the TTR program, while the end of 2016 saw us begin the EKIP program. Both of these programs, funded by the **National Park Foundation**, encouraged local students to learn more about the national park in their backyard. EKIP's focus was on 4th graders because the National Park Service celebrated its 100th birthday in 2016. Over 500 local 4th grade students participated in the TTR program and 600 came to PEEC for the EKIP program.



WOW
on the
water

Women on the Water (WOW) and Boys in Boats (B2) – These 2 river-related programs were funded by the **William Penn Foundation**. Each program consisted of recruiting HS aged participants, teaching them about water quality, and canoeing/kayaking/camping on the Delaware River! B2 began this year in response to requests from boys after hearing about their female counterparts' PEEC experiences! This year, more than 30 girls and 15 boys participated in their own 5 day program. These programs will continue in 2017.



The Sci-Q Project – Over 20 8th-10th graders from Pennsylvania, New York and New Jersey were part of a week-long immersive, intensive Science Program! Students went to ESU one day for four hands-on classes led by ESU professors. They paddled the Delaware River through the Water Gap and continued their geology lesson by going to Lake Harmony to inspect the boulder fields. They learned about methane, liquid nitrogen, and worked on some sustainability projects. A big THANK YOU to **Sanofi Pasteur** for funding this year's Sci-Q Project.

**THE SCI-Q
PROJECT**

Active Adventures – Find Your Path to Wellness – There is more to good health programs than hiking. That was the premise for the Active Adventures program. Participants were not only encouraged to hike and make healthy snack choices, but Yoga, Tai Chi and Qi Gong, and Mindfulness classes were also offered, thanks to funding from the **National Park Foundation** and the **AllOne Foundation**. Similar and additional health related activities will be offered in 2017 since funding from AllOne continues through May 2017.



“Look, Ms. Johnson, look I caught a frog!!” ~ Summer Science in the Poconos, Newark Public Schools, Newark, NJ

2016

Golf Outing 2016

The 16th Annual Golf Outing, held this past June at the Lords Valley Country Club at Hemlock Farms, was a great success. Golfers enjoyed this premier course and a delicious al fresco luncheon. The attendees enjoyed the wonderful weather and helped to raise over \$8,000 toward PEEC programs.



Wild Things Ball 2016

The Metamorphosis Ball, the 4th Annual Wild Things Ball, was held Saturday, September 17, 2016 in PEEC's Visitor Activity Center / Dining Hall. Music was provided by The A Band and the event was catered by The Settlers Inn of Hawley, PA. Over 100 attendees enjoyed dinner and dancing while helping to raise over \$76,000 for PEEC.



"I loved orienteering because we learned something new and we were doing it independently." ~ Wagner Middle School, New York, NY

Education Department Updates

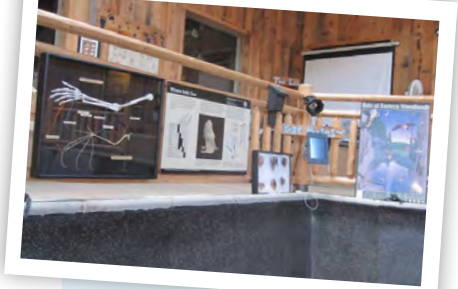
New Snake Enclosure – Our resident black rat snake moved into his EcoZone dream home this year from his aquarium “starter home.” He would like to thank instructor Mason Ritter and tell him that he did a “sssssssssssssuper job!”



Track Plaque – With financial assistance from the National Park Service, we were able to purchase a North American Mammal Track Panel to illustrate tracks. It has often been difficult for by-standers to see the tracks being made in the current tracking boxes.



Bat Display – We added to the EcoZone bat cave information by creating a display designed to focus on a fruit bat wing in relation to the similar bone structure of a human arm. Additionally, all of our Bat Bytes displays were moved closer to the EcoZone bat cave.



Mounted Beavers – Two mounted beavers, taxidermy funded by the National Park Service, were installed in the EcoZone beaver lodge. The realism of the life-like poses better demonstrates the day-to-day life of North America's largest rodent better than the stuffed animals previously used.



Chalkboards – PEEC was able to purchase four chalkboards from Delaware Valley School District for an amazing \$10/piece before they demolished their elementary school. The chalkboards replaced current chalkboards in Rooms One and Two and a chalkboard was added to Room Three. Room One's original chalkboard was moved to the Log Cabin and the fourth, smaller chalkboard is being saved for use in the future 'Sustainability lodge.'



“We learned to trust each other and we supported each other, too.” ~ Washington Heights Expeditionary Learning School: WHEELS, New York, NY

2016

Facilities



- Re-insulated and partially re-sided Cabin 28 and installed new windows in the kitchen
- Removed siding on cabins 1,3 and 4, added foam insulation and resided
- Reinsulated Cabin 29
- Finished cabin 9 renovations on interior and exterior
- Installed underground propane gas lines for cabins 1-9
- Studded cabin 5 outside and added foam insulation and siding
- Installed new LED lighting and fans in front office
- Installed underground wiring for cabins 6 and 7
- Removed old and dangerous coverings from fire hydrants



Fast Facts

2016 Volunteers: 1085.25 Volunteer hours completed by 128 volunteers

Public Programs in 2016: Just over 2,300 attendees to public programs

Growing Green: Since 2010, PEEC & Easter Seals of Northeastern PA have partnered to offer Growing Green, a summer camp for special needs campers. This program continued to grow and improve in 2016. Growing Green continues to integrate various activities with PEEC Summer Camp.



“How could anyone say this is boring? This place is awesome!!!” ~ Shrewsbury Elementary School, Shrewsbury, NJ

2016

Financial Report

Revenue gains other supports

Instructional fees
Grants
Contributions
Misc
Fundraising
Investment income
Net unrealized (loss) gain on investments
Gift shop
Other income

2015

2016

1,040,009.00	1,050,645.00
285,485.00	250,615.00
66,457.00	74,135.00
3,039.00	—
60,783.00	64,341.00
1,081.00	3,156.00
(1,938.00)	181.00
15,332.00	13,802.00
—	—

Total revenue, gains and other support

1,470,248.00

1,456,875.00

Expenses

Instructional
Management and general
Development and fundraising

1,114,532.00	1,149,254.00
295,857.00	292,185.00
64,331.00	68,149.00

Total expenses

1,474,720.00

1,509,588.00

(Decrease) increase in net assets from operations

(4,473.00)

(52,713.00)

Net assets, beginning of year as previously reported

280,558.00

276,085.00

Net asset, ending

276,085.00

223,372.00

Cash flow from operating activities

Increase (decrease) in net assets

(4,473.00)

(52,713.00)

Adjustment to reconcile increase (decrease) in net assets to net cash provided (used) by operating activities:

Depreciation
Unrestricted non-cash contribution
(Gain) loss on disposal of equipment
Interest charges applied to line of credit
Unrealized loss (gain) on investments

74,067.00	56,973.00
—	—
—	—
—	—
—	—

Change in accounts receivable
Change in prepaid expenses

(21,161.00)	20,881.00
(3,187.00)	2,958.00

Change in inventory
Change in accounts payable
Change in accrued wages
Change in accrued expenses
Change in deferred revenue
Change in grants receivable
Change in pledges receivable

1,016.00	(665.00)
(22,307.00)	136.00
—	—
3,083.00	3,351.00
(52,181.00)	52,035.00
48,250.00	(80,050.00)
2,500.00	10,000.00

Net cash provided by (used in) operating activities

25,607.00

12,906.00



River Days Pledge Poster



EcoZone Discovery Room!



Dingmans Ferry Bridge Sign



Fabric Arts at PEEC!

"I feel I can breathe better here out in the woods." ~ High School for EBT, Brooklyn, NY

2016



2016 PEEC SUPPORTERS



BALD EAGLE

Barbara Brummer
Robert & Amy Litzenberger
Richard & Rebecca Lindsey
Lamtec Corporation
Custom Laminating Corp.

Norcross Wildlife Foundation
George Hill
Dave Miller
Carolyn & Paul Shuttleworth
Peter Derrenbacher

Ready Set Run
Manko Gold Katcher Fox LLP
Daniel White
Carolyn Licht

RED SHOULDERED HAWK



Jack & Carol Padalino
Greater Pike Community Foundation
David Milberg, Milberg Factors, Inc.
Dan Abramson
Pocono Medical Center
William & Karen Keenan
Marcia Kaplan Mann
Gregory J. & Patricia Lutfy
Paul Schaeffer
Norman W. Spindel
Michelle Franks
Lee & Sonda Miller
Alan Leventen

Rob Hut & Lisa Miller Hut
Joanne Bruno
Jeffrey Rosalsky
Howard Whidden
Daniel Amenda & Anna Panettiere
Brian Exton & Joy Karnas
Samuel & Jillian Herschkowitz
Bohlin Cywinski Jackson
Gail Rosalsky
DP Luhrs True Value Hardware
Pocono Mountains Visitors Bureau
Patricia Swoyer-Salber
Sarina Betz

Sandra Hance
PSEG Services Corporation
Price Chopper's Golub Foundation
Pine Forest Camp
PennyWise Fuel Company
Michael & Elizabeth Geitz
Marvin & Frances Naftal
Maleyne Syracuse &
Michael Trenner
Lisa Rosenberg
Ken & Amy Ferris
Jeffrey Rothstein & Allen Doane
Gary Roth & Czashka Ross

Frank & Gail Wershing
Exelon Generation
Company, LLC
Elaine Smithson
Ed Winters
Brian & Kathy O'Hare
Brenda & Sam Ruello
Alan & Michelle Brower

BLUE HERON



Marc E. Gold, Esquire
Michael Taylor
Mark Cole
James McDonald
David Rheinheimer
Michael Derrenbacher
Joseph & Maria Doe
Anne Lazarus
Dingmans Choice & Delaware Bridge Co

Mary Cooney & Steve Buma
Andrew & Julie Wilshinsky
Lynn Robinson
Kevin & Janine Morley
James & Gloria Ross
Charles Paull
Lorraine Gregory
Vincent Luisi
Sander White

Ronald Kuby & Marilyn Vasta
Rob Martin
RKR Hess Associates
Richard and Patricia Cantor
Rekha Kurikoti Rose
Pam Gregory & David Palladino
Niki Jones
Lawrence & Carole Owczarczak
Jolie Defeis

Harold & Kathleen Aaron
East Stroudsburg University
CPA Rifles
Claudia Rocca
Brian Swallow
Allison Taylor

SCARLET TANAGER



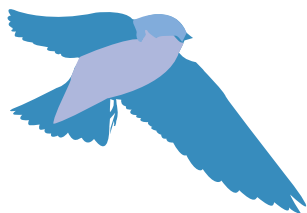
Pat L. McCarrick
Stephen McBride
Thomas & Kate Kirkwood
Nora Morgenstern
National Park Women
Cathleen Halainen
Michael & Victoria Brown
Margaret & John Post
Judie Rosborough
John McCauley
Derek Scott
Barbara Frazier
Angela Watson
Hideaway Hills Golf Club
Roberta Bramhall
Mikki Weiss
Lou Wentzler
Jim and Lee Amigh
Dr. Susan Halsey
Carol Norr
Waterwheel Café
US Foods

Target Fire Protection
State Representative
Rosemary Brown
Sondra Rosalsky
Performance Foodservice Roma
Davis R. Chant Real Estate, Inc.
B&K Tax Service, Inc.
Al-Dana Mechanical Contractors
Susan Saunders
Robert Palmer
Richie Roche
Larry Martone
Kris Leshanski
John Magnotti
John Brophy
Gene Farrell
Dawn Kendall
Constabile Augustino
Bob Detlefs
Sheila Salmon
Sandy Fillebrown
Roy Arezzo

Robert & Beth Frederick
Philip Munkacsy
Peter Bochnovich
Paula Katz
Paula DeLucco
Paul Horning
Our Lady of the Mountain
Council 9832
Niels Kistrup
National Contractors, Inc.
Naomi & Ron Anafi
Nancy Roberts
Michael Orio
Margaret Parlapiano
Linda Franzmann
Judy White & Graham Rice
Judy Fitzpatrick
Joseph and Sara Bedrick
John Ianacone &
Cynthia D'Ambrosio
Jeanne & Grant Genzlinger
Jean Hoff

Janet Carter
James Pedranti
Helen Conover
Gregory A. Greco
Elizabeth Mindlin
Davis & Judy Chant
Daniel & Irene Brovey
Christina Horbey
Bruce Taylor & Janice Basler
Bob & Stacy DeYoung
Betty Lee Bingnear
Meagen Kameen
Marguerite Rivetti-Kauffman
& Jack Kauffman
Donna & Richard Faustini
Lars Loercher
Lana Hill
Helen G. Ripple
Fred & Helen Buchholz/Ripple

TREE SWALLOW



Yelena Gorn
Steve & Jen Schoonover
Stanley & Helen Gittleman
Robert Newmark
Robert & Melody Remillard
Robert & Mary Balton
Rebecca Myers
Rachel Check
Pocono Outdoor Club
Peter & Kelly Wulforth
Patti & Jeff Shreiner
Nicholas and Maggie Niles

Nancy Irlbeck
Nancy Fezell
Mike & Kristen Brubaker
Matthew & Michelle Raio
Mary Munn
Lydia Garnett
Lois & Jerry Snyder
Laurel Bishow
Kenneth Snowden
Kelly Gaughan
Kathrin DeSmedt
Karen Medina

Joseph & Jane Vacca
John & Carol Fern Culhane
Jill Schwartz
Jerome & Cora Bodkin
Jeffrey Chapman
Janet Martin
James Allwein
Gussie Graffeo
George Lauscher
Dr. Noor Shamim
Dr. & Mrs. Wilbert A. Lyons
Dr. & Mrs. Franklin Strong

Donald & Chris Burton
David Goldberg
Daniel Melvin
Christopher Gaddess
Christine Herz & Michael Russell
Annamaria Alimosy
Alan Wyckoff
Al & Donna Campoli

EASTERN PHOEBE



Howard Hyde
Timothy Hodgdon
Thomas LaDuke
Stacy Rodriguez
Sheila Fitzgibbon
Sara Cohen
Richard & Donna Wieggers
Phyllis Sexton
Philip and Sima Paskowitz
Paul Boos
Paul & Marguerite Menditto

Nikolaj Hines
Michael Lichtenstein
Mary Murray
Mariann Oswald
Margaret Stroehlein
Lynn Glancy
Lucille Virzi
Lisa Golubiewski
Linda Shay
Linda Mrozinski
Kelli Busch

Judith Adelson
John Serrao
John Beljeau
Jackie Liotto
Gregory & Anne Steinberg
Gloria Kamprath
George Warden
Eileen Baxter
Debbie Risko
Claire Mazan
Charles McCarthy

Carolyn Hodges
Bill Herbert
Angelo Correa
Adele Breikreitz
Joseph Pasquale
Mary & Richard Cramer
Christine Nelson
Andrew Cortez
Auman Design
Vickie Marmorstein
Jean Borcina

GRANTS & CORPORATE SPONSORS

William Penn Foundation
Dancing Tides Foundation
Berks County Community Foundation
Sanofi-Pastuer

National Park Foundation
Victoria Foundation
PSEG Foundation
Berkowitz II Foundation, Inc.
Anne Spychala Family Charitable Foundation

AllOne Foundation & Charities
The Dime Bank
Waste Management
AM Skier Agency, Inc.

"I never thought nature was so beautiful." ~ High School for EBT, Brooklyn, NY

2016

570-828-2319

538 Emery Rd, Dingmans Ferry, PA 18328

peec@peec.org | www.peec.org



PEEC

**Pocono Environmental
Education Center**

PEEC IS CLOSE TO HOME

Where Learning comes Naturally